



PROGETTO DEFINITIVO-ESECUTIVO
"RIPRISTINO E RIFUNZIONALIZZAZIONE DELLA SCUOLA DELL'INFANZIA IN SEGUITO A EVENTO ALLUVIONALE NOVEMBRE 2016"

codice 111E

committente:
Comune di Ceva
P.zza Vittorio Emanuele, 17
12073 CEVA
Sig. Sindaco: Rag. VIZIO Alfredo

tecnico incaricato:
Ing. Razio Federico
Via Marengo, 95
12073 Ceva

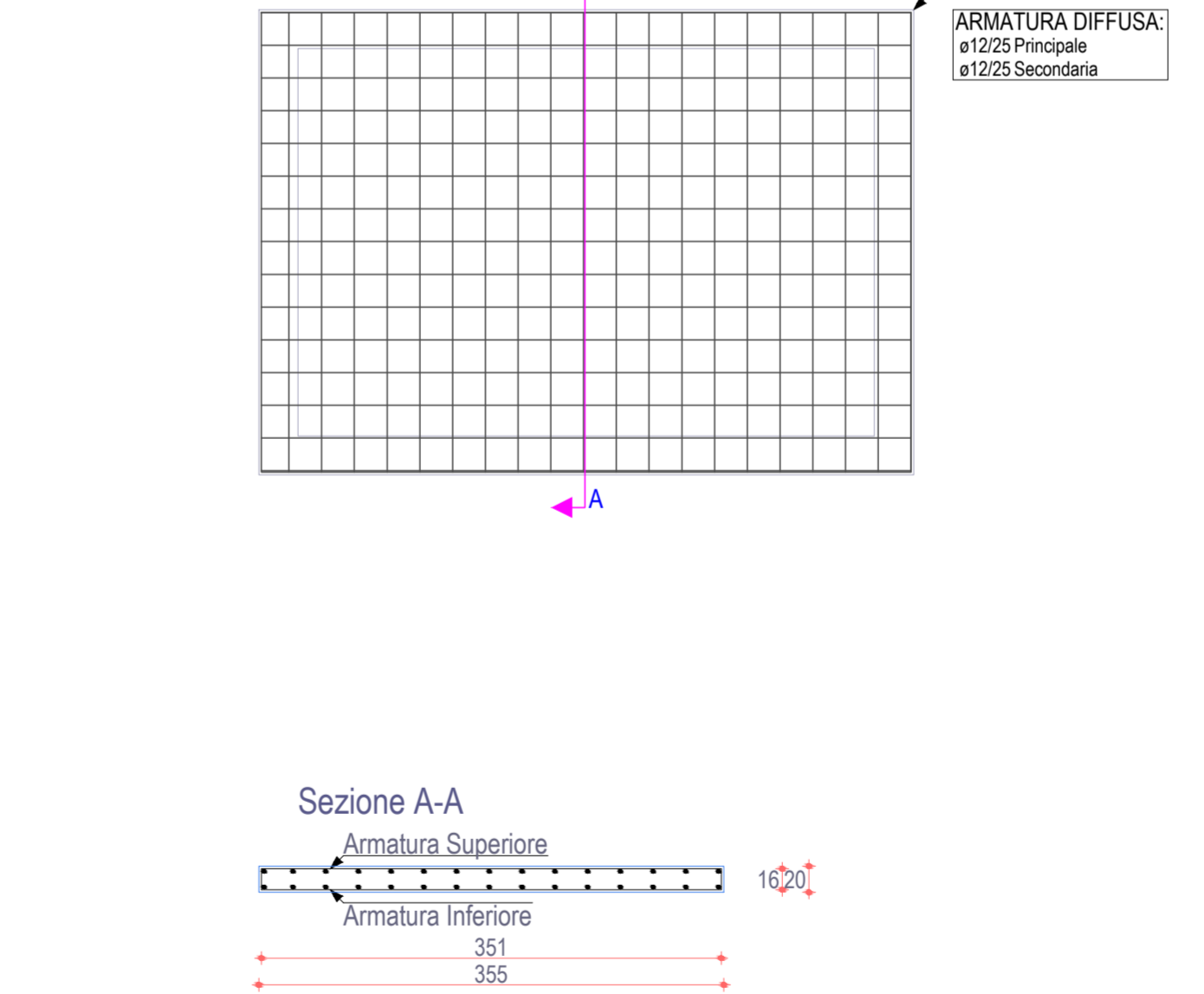
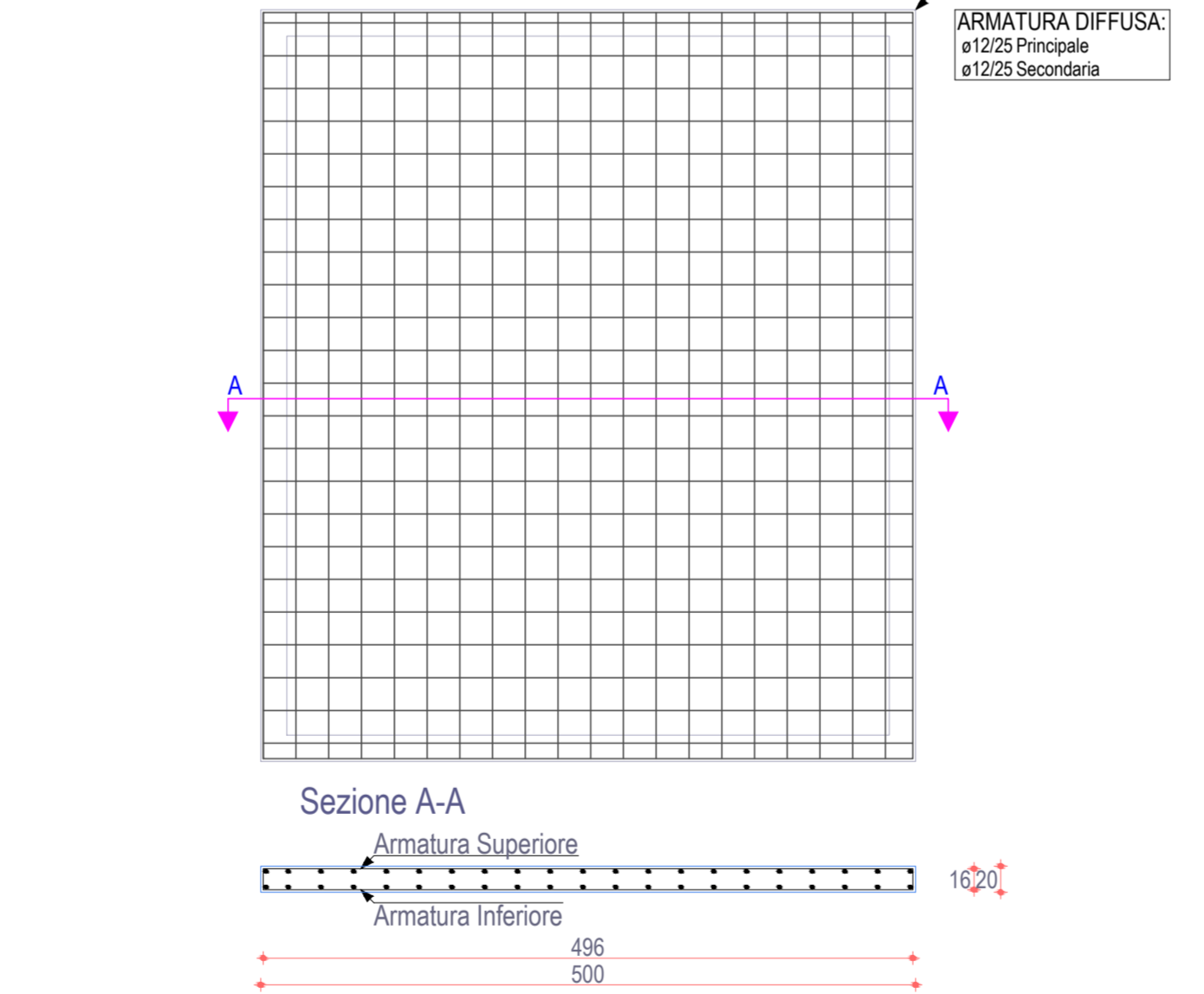
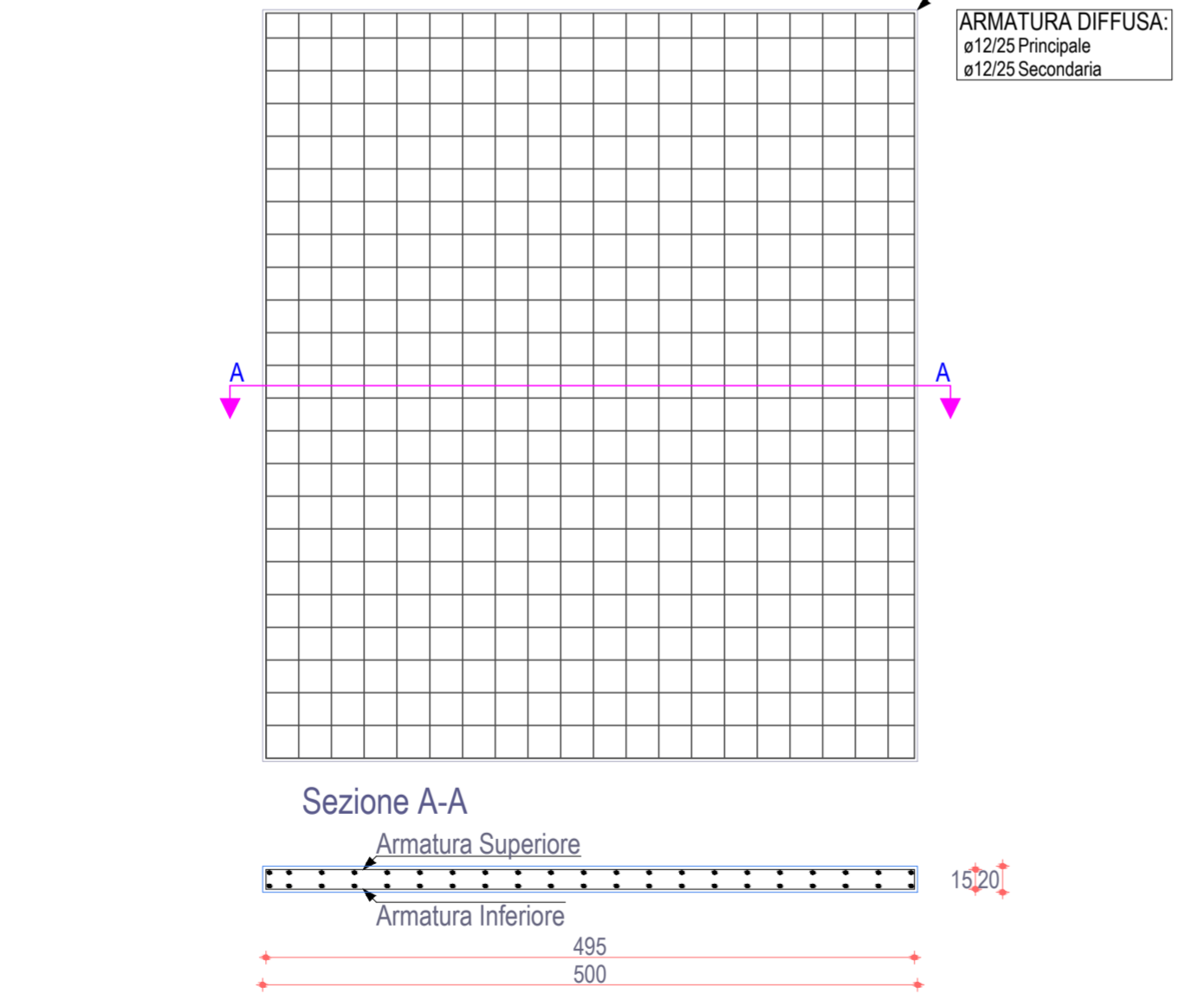
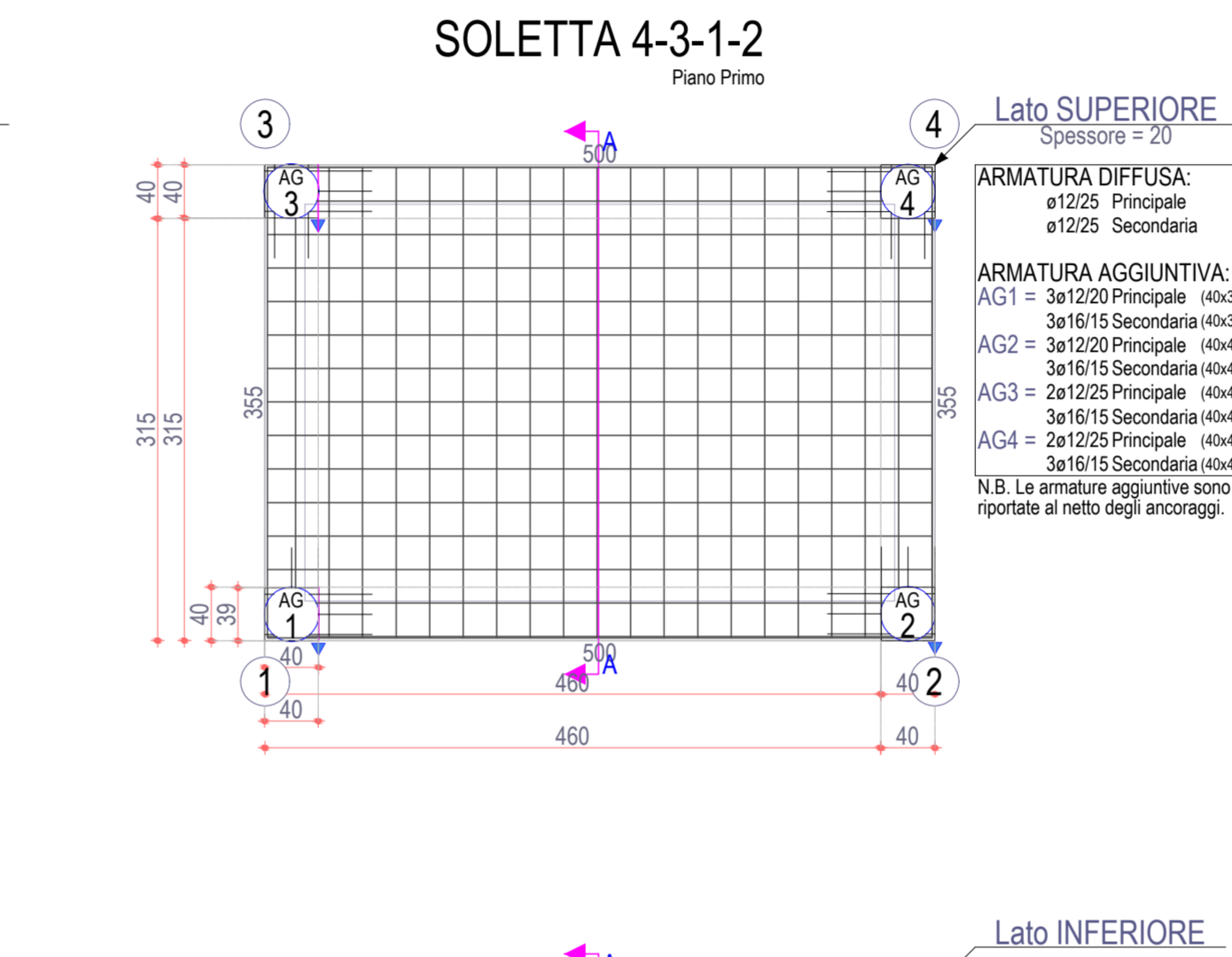
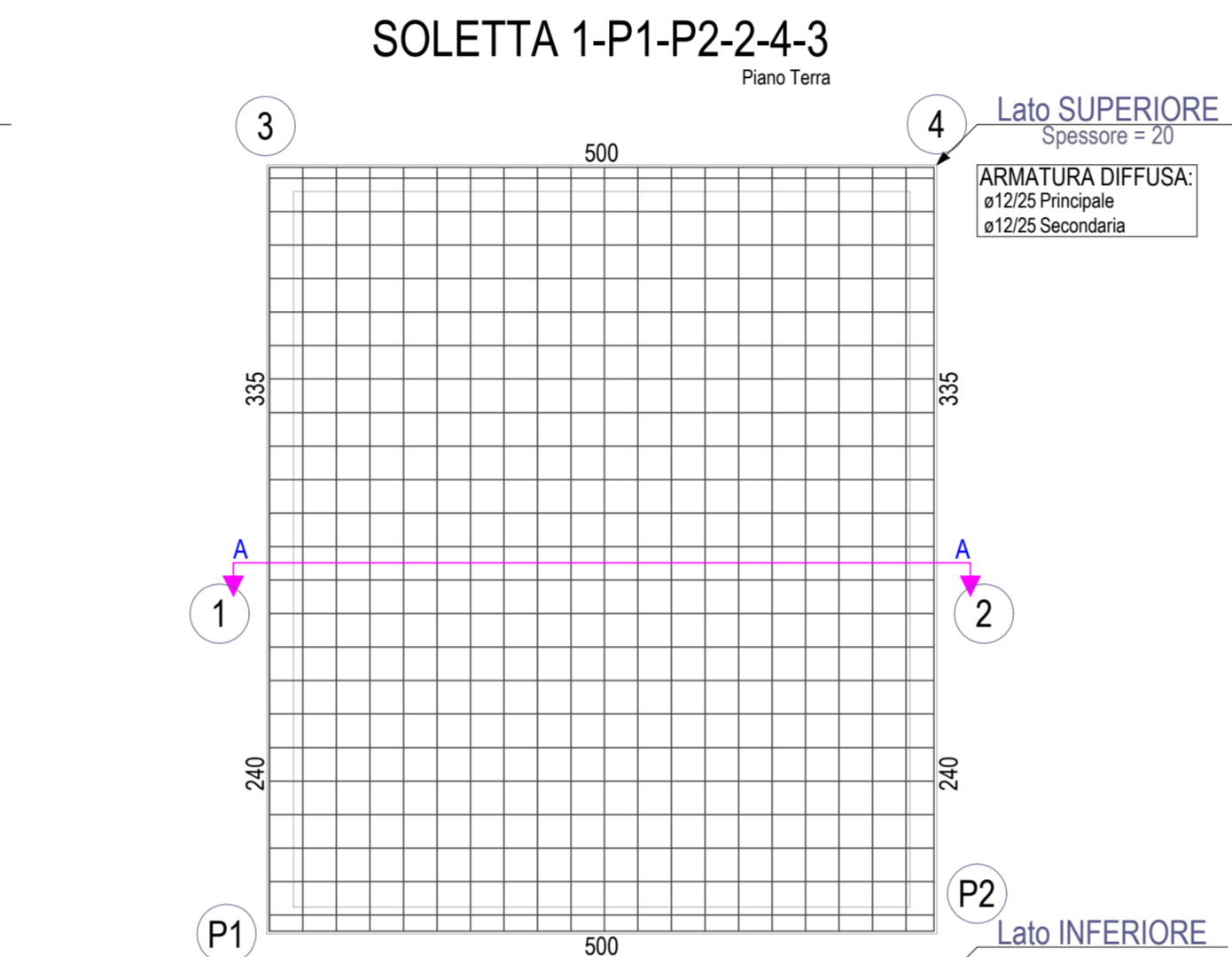
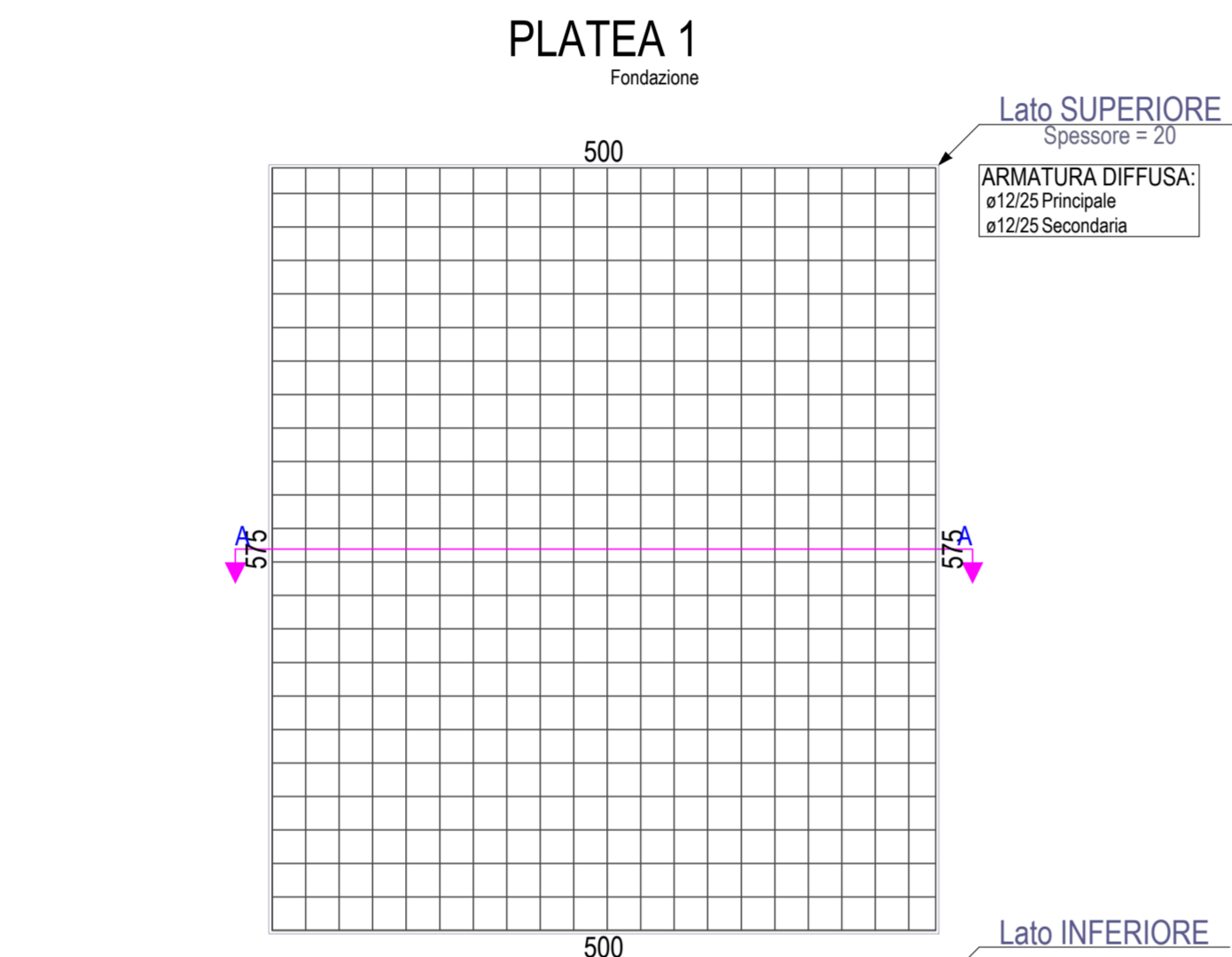
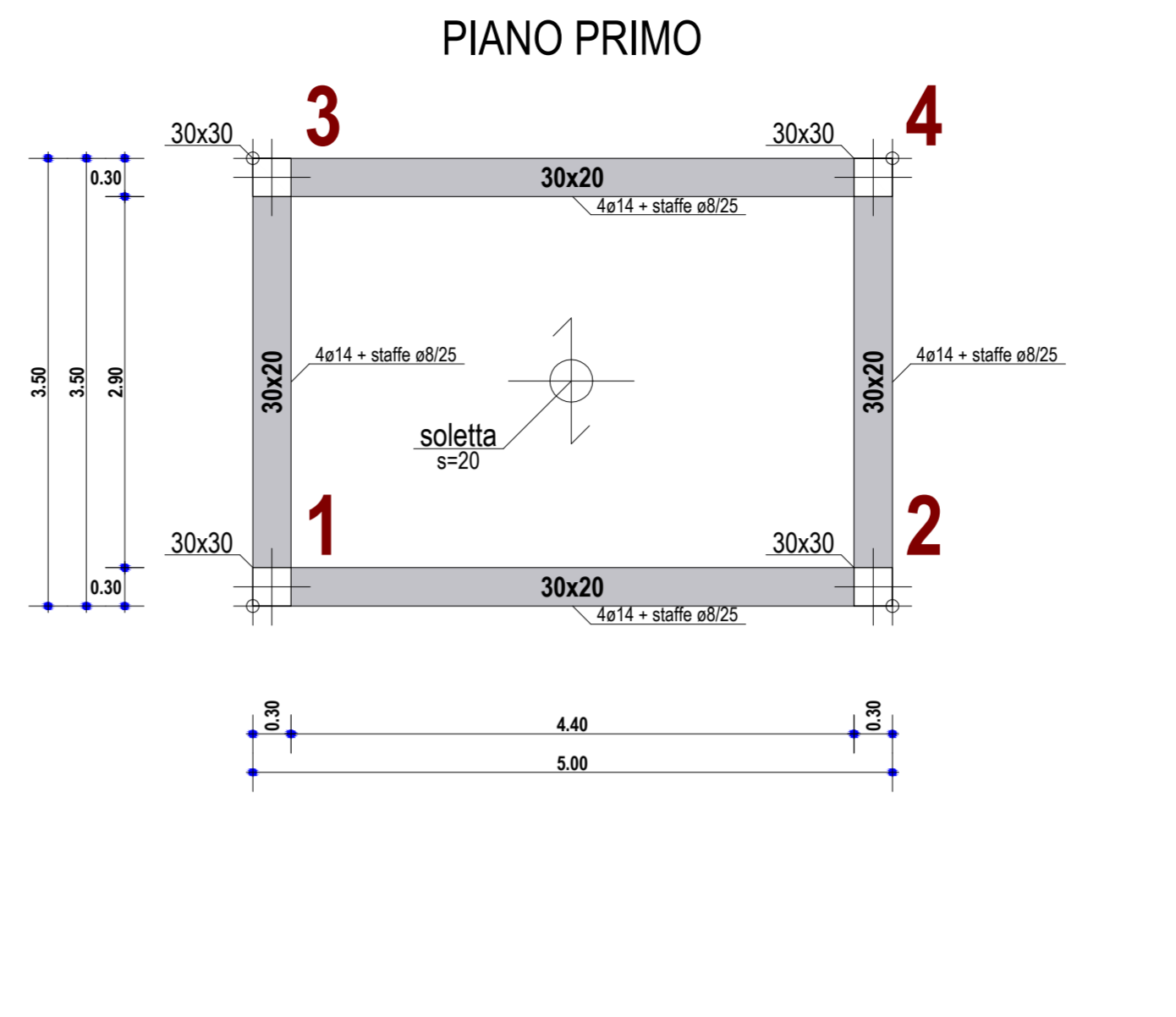
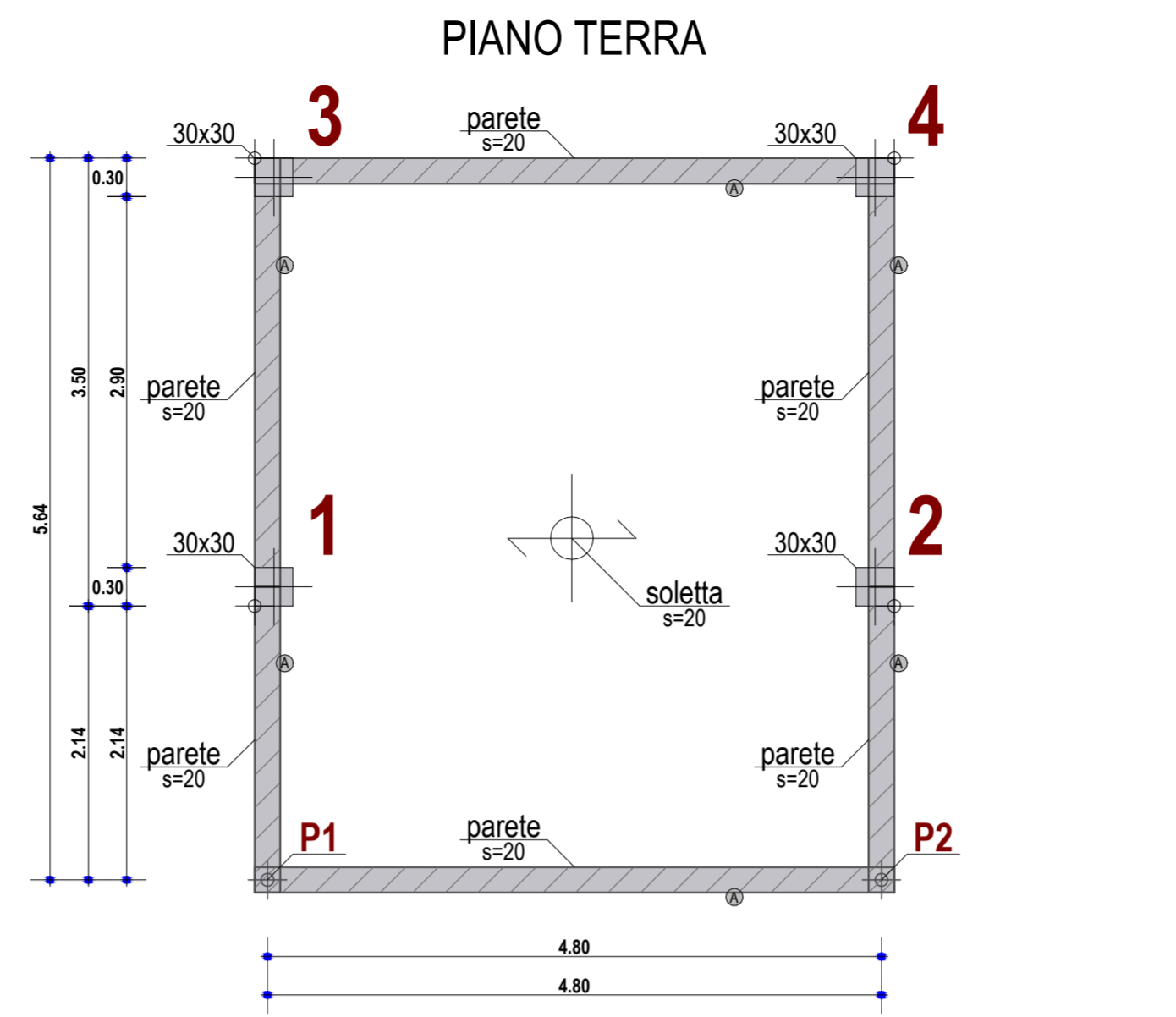
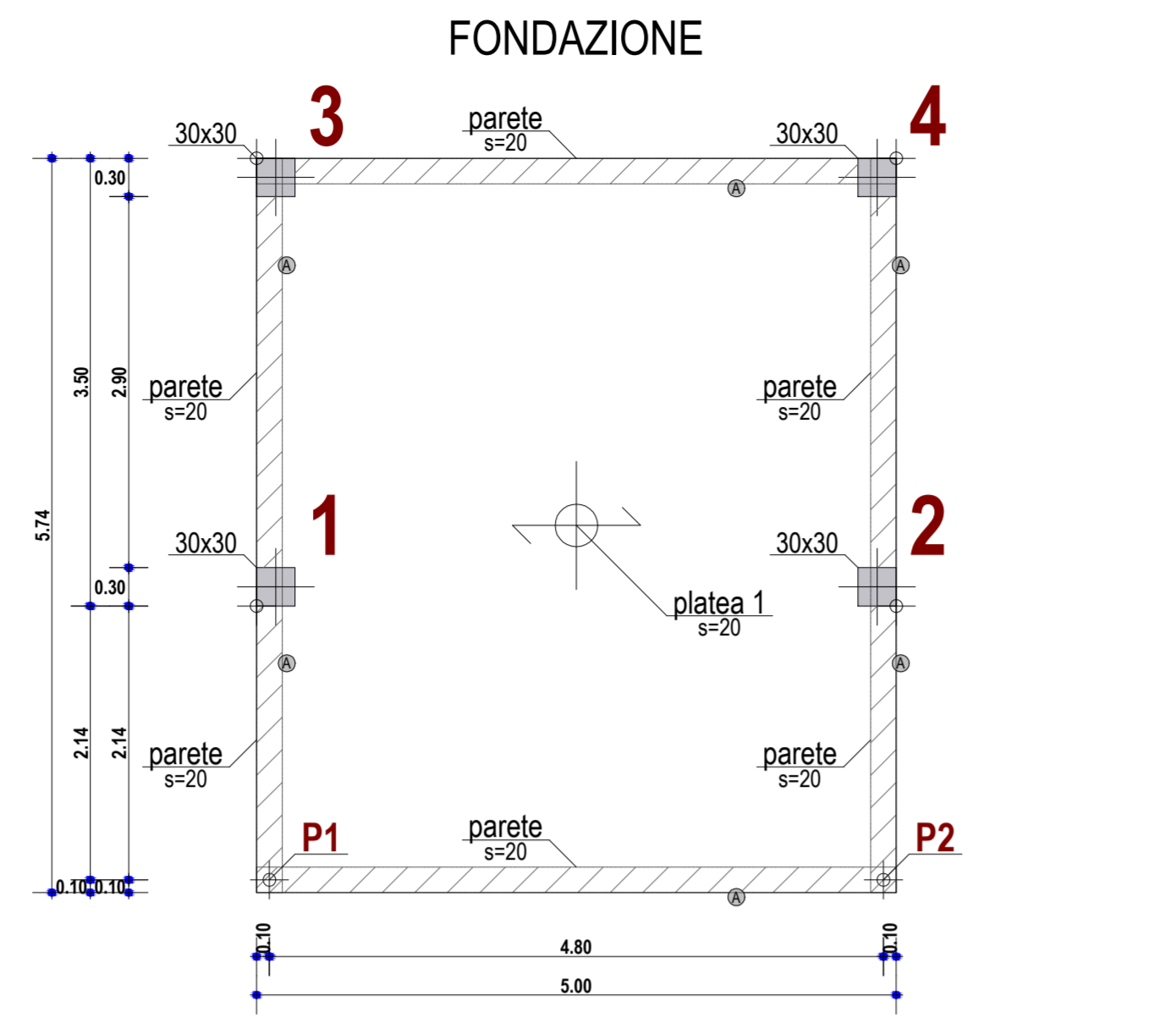
C.F. RZO FRC 74109 D205G
P.IVA 03003810045
Cell. 333 1488804

data:
\$(*XUUd"b"%"\$*

oggetto
Carpenteria e armatura centrale termica

scala allegato
1:50 6.4ST

spazio Ku'bo
architettura & ingegneria
via Marengo n.95 12073 Ceva (CN)
tel/fax 0174 721999 - e-mail: info@spaziokubo.com



	Piano Terra	Piano Primo
1		PASSO STAFFE 6ø8/9 appoggi per 54 cm 12ø8/13 mezziera per 147 cm STAFFE staffe 1ø8 (L=120)
2		PASSO STAFFE 6ø8/9 appoggi per 54 cm 12ø8/13 mezziera per 147 cm STAFFE staffe 1ø8 (L=120)
3		PASSO STAFFE 6ø8/9 appoggi per 54 cm 8ø8/13 mezziera per 92 cm STAFFE staffe 1ø8 (L=120)
4		PASSO STAFFE 6ø8/9 appoggi per 54 cm 8ø8/13 mezziera per 92 cm STAFFE staffe 1ø8 (L=120)

